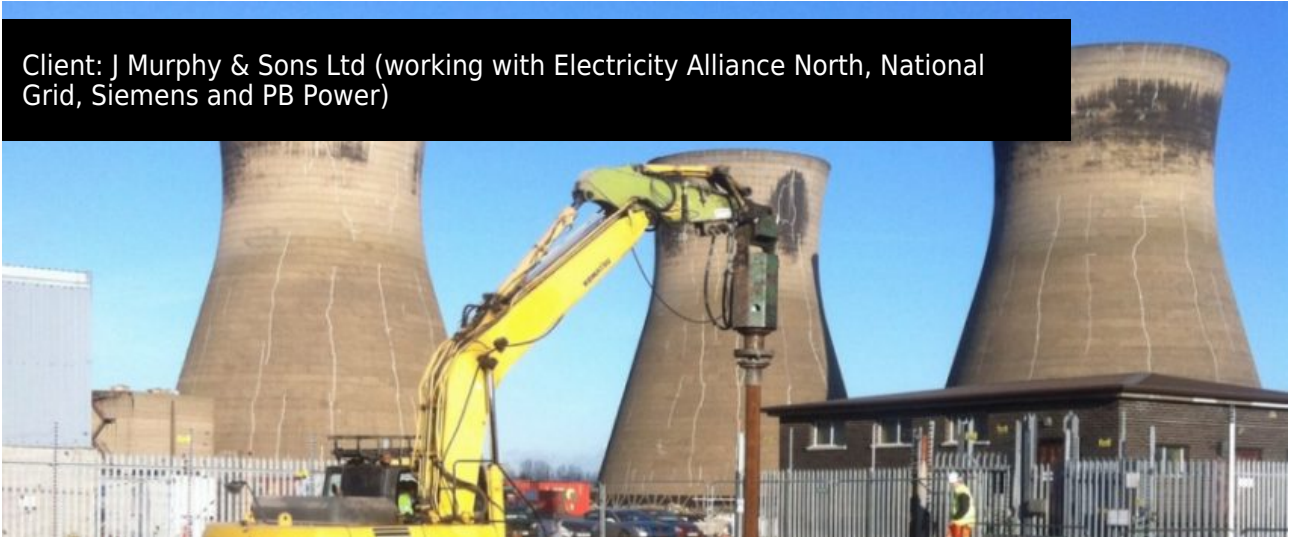


Project: Thorpe Marsh- Energy

Client: J Murphy & Sons Ltd (working with Electricity Alliance North, National Grid, Siemens and PB Power)



Brief: Design and Install helical piles solution as a cost effective alternative to concrete.

Solution: 56 Helical Piles installed around existing underground services.

Installation took only 10 days including compression testing to 150% of maximum working load.